



TOUGH PAD FZ-N1

SLIM AND LIGHTWEIGHT 4.7" HANDHELD TABLET WITH ANDROID™ AND ANGLED REAR BCR

The FZ-N1 brings together the best of handheld, smartphone and barcode reader functionality into a single rugged and hard working 4.7" tablet. Thanks to its fully-rugged design, with MIL-STD-810G certification, IP67 rating, 1.8-metre drop resistance* and the ability to withstand as many as 1,000 tumbles from a height of 1 metre, the device delivers a long life span and very low TCO. The user-replaceable and warm-swappable, battery combined with a range of accessories such as carry and mounting solutions, make it a truly mobile device. The FZ-N1's state-of-the-art Qualcomm® quad-core processor, together with 2GB RAM, guarantees high performance.

This cutting-edge device has been designed for mobile workers in the postal and courier services, transportation and logistics, emergency and public safety, utilities, retail, manufacturing and defence sectors.

- Android™ 5.1
- 4G LTE / 3G data and voice capability
- Integrated 1D/2D angled rear barcode reader
- Qualcomm® MSM8974AB 2.3 GHz Quad-core processor
- 2 GB RAM, 16 GB storage and microSD card slot
- 4.7" HD (1280 x 720) daylight-readable display with glove and rain mode
- Optional passive and active pen for precise signatures
- MIL-STD 810G certified with 1.8-metre drop* resistance
- IP67 rated (submersible in water up to 1 metre for 30 minutes)
- 8MP rear and 5MP front camera
- User-replaceable battery with warm-swap function
- NFC, Bluetooth 4.1, WiFi, micro USB port and docking connector
- Triple microphones for superior noise suppression
- Dual front speakers delivering in total up to 100 dBA

* Tested at Panasonic factory



TOUGHPAD FZ-F1

SLIM, LIGHTWEIGHT 4.7" HANDHELD TABLET WITH WINDOWS 10 IOT MOBILE ENTERPRISE AND ANGLED REAR BCR

The Toughpad FZ-F1 brings together the best of handheld, smartphone and barcode reader functionality into a single rugged and hard working tablet. Thanks to its fully-rugged design, with MIL-STD-810G certification, IP67 rating, 1.8-metre drop resistance* and the ability to withstand as many as 1,000 tumbles from a height of 1 metre, the device delivers a long life span and very low TCO. The user-replaceable and warm-swappable battery, combined with a range of accessories such as carry and mounting solutions, make it a truly mobile device. The FZ-F1's state-of-the-art Qualcomm® quad-core processor, together with 2GB RAM, guarantees high performance.

This cutting-edge device has been designed for mobile workers in the postal and courier services, transportation and logistics, emergency and public safety, utilities, retail, manufacturing and defence sectors.

- Windows 10 IoT Mobile Enterprise
- 4G LTE / 3G data and voice capability
- Integrated 1D/2D angled rear barcode reader
- Qualcomm® MSM8974AB 2.3 GHz Quad-core processor
- 2 GB RAM, 16 GB storage and microSD card slot
- 4.7" HD (1280 x 720) daylight-readable display with glove and rain mode
- Optional passive and active pen for precise signatures
- MIL-STD 810G certified with 1.8-metre drop* resistance
- IP67 rated (submersible in water up to 1 metre for 30 minutes)
- 8MP rear and 5MP front camera
- User-replaceable battery with warm-swap function
- NFC, Bluetooth 4.1, WiFi, micro USB port and docking connector
- Triple microphones for superior noise suppression
- Dual front speakers delivering in total up to 100 dBA

* Tested at Panasonic factory

TOUGHPAD FZ-F1 / FZ-N1 ACCESSORY ECOSYSTEM



Panasonic COMPASS covers everything you need to deploy and manage your Panasonic rugged Android tablets and handholds securely in your business, over their lifetime. Look out for the logo next to the software and services that fall under the COMPASS umbrella in this catalogue.

Visit business.panasonic.co.uk/computer-product/COMPASS to find out more.

POWER MANAGEMENT SOLUTIONS

Standard Battery Pack (3200 mAh)

Part No: FZ-VZSUN110U

✓ FZ-F1 and FZ-N1



Extended Battery Pack (6400 mAh)

Part No: FZ-VZSUN120U/W
(U: with back case; W:
without)

✓ FZ-F1 and FZ-N1



USB Charger Kit

Part No: FZ-KN1AA00*

*1: Continental; 2: UK

✓ FZ-F1 and FZ-N1

No
picture
available

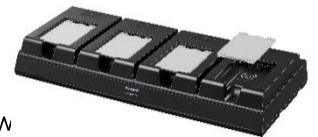
4-bay Battery Charger

Compatible with standard an
extended battery.

Part No: FZ-VCBN121*

*E: UK; 3: Continental; D: Sw

✓ FZ-F1 and FZ-N1



AC/DC Combo Adaptor

Part No: PCPE-LNDAC01

✓ FZ-F1 and FZ-N1



AC Power Supply

For use with charging cup (FZ-
VCBN11U) and desk top
cradles.

Part No: CF-AA6373A* E/3/D

*E: UK; 3: Continental; D:
Swiss

✓ FZ-F1 and FZ-N1



Low Power Adaptor (32W)

Part Nos:

- PCPE-LND1234 - 12-32Vdc
- PCPE-LND1214 - 12-16Vdc

✓ FZ-F1 and FZ-N1



Mil Spec Vehicle Charge

90W (11 to 32VDC)

Part No: CF-LNDMLSTD

✓ FZ-F1 and FZ-N1



Car Charger For Forklifts

Part Nos:

- PCPE-LNDFH11: 70-110V
- PCPE-LNDFH32: 12-32V
- PCPE-LNDFH60: 20-60VDC

✓ FZ-F1 and FZ-N1



Please refer to third party accessory catalogue or the website for full product details

PRODUCTIVITY SOLUTIONS

Panasonic FZ-F1 / FZ-N1 Active Pen

MOQ 2000

Part No: FZ-VNPN11U

✓ FZ-F1 and FZ-N1



Stylus Tether

Part No: PCPE-INFUVA2

✓ FZ-F1 and FZ-N1



Panasonic Thin Nib Passive Pen

Part No: CF-VNP021U

✓ FZ-F1 and FZ-N1



Capacitive Stylus Pen

Part No: PCPE-LDYST01

✓ FZ-F1 and FZ-N1



CONNECTIVITY SOLUTIONS

Semi-Rugged 4G/WiFi Router

2 port 4G LTE + WiFi Router
w/AC PSU

Part Nos:

- PCPE-CRDLLP2 Router only
- PCPE-CRDSOL1 Router with MIMO Antenna

✓ FZ-F1 and FZ-N1



Rugged 4G/WiFi Router

4G router with active GPS,
802.11ac WiFi for up to 128
devices, and ignition sensing.
Also NPIA Spec5 approved

Part No: PCPE-CRDL110

✓ FZ-F1 and FZ-N1



SECURITY & PROTECTION SOLUTIONS

LCD Screen Cleaning Cloth

Part No: CF-VNC001W

MOQ: 10 pcs

✓ FZ-F1 and FZ-N1



Shatterproof Protective LCD Film

10 sheets

Part No: FZ-VPFN11U

✓ FZ-F1 and FZ-N1



Please refer to third party accessory catalogue or the website for full product details

CARRYING SOLUTIONS

Panasonic Holster for FZ-F1/FZ-N1

Part No: FZ-VSTN12U

✓ FZ-F1 and FZ-N1



Panasonic Hand Strap for FZ-F1/FZ-N1

Part No: FZ-VSTN11U

✓ FZ-F1 and FZ-N1



Quick Release Clip Holster

With multipurpose belt loop and optional Quick Release Clip.

Part No: PCPE-SYSX101

✓ FZ-F1 and FZ-N1



Synthetic Case for FZ-F1/FZ-N1

With Click Fix stud on rear.

Part No: PCPE-SYS1573

✓ FZ-F1 and FZ-N1



Click Fix Belt Loop

Compatible with PCPE-SYS1573

Part No: PCPE-SYS2128

✓ FZ-F1 and FZ-N1



Chest Harness with Click Fix Dock

Compatible with PCPE-SYS1573

Part No: PCPE-SYS2145

✓ FZ-F1 and FZ-N1



FZ-F1 / FZ-N1 Holster

Includes belt/shoulder strap for hands-free use

Size: 102 x 165 x 57mm / 4.0 x 6.5 x 2.25"

Part No: PCPE-INFF1H1

✓ FZ-F1 and FZ-N1



FZ-F1/N1 Enhanced Hand Strap

Adjustable hand strap. (Pack of 2 replacement elastics - PCPE-INFF1S4)

Size: 57 x 114 x 12.7 mm / 2.25 X 4.5 X 0.5"

Part No: PCPE-INFF1S2

✓ FZ-F1 and FZ-N1



FZ-F1/N1 Hand Strap

Size: 32 x 152 x 6.35 mm / 1.25 X 6.0 X 0.25"

Part No:

- PCPE-INFF1S1 - Large / Extra Large (LXL)
- PCPE-INFF1S3 - Small / Medium (SMD)

✓ FZ-F1 and FZ-N1



Please refer to third party accessory catalogue or the website for full product details

DOCKING SOLUTIONS

Charging Cup and Stand

AC adaptor not included. Purchase CF-AA6373A* E/3/D separately.

Part No: FZ-VCBN11U

✓ FZ-F1 and FZ-N1



Single Device Desktop Cradle for FZ-F1 & FZ-N1

AC adaptor included.

Dimensions: 43 x 194 x 99mm / 5.7 x 7.7 x 3.9"

Weight: Approx. 0.52kg / 1.2 lb

Part No: FZ-VEBN111* E/3/D

*E: UK; 3: Continental; D: Swiss

✓ FZ-F1 and FZ-N1



4-Device Desktop Cradle

AC adaptor included.

Dimensions: 466 x 212 x 95 mm / 18.4 x 8.4 x 3.8"

Weight: Approx. 2.0 kg / 4.4 lb

Part No: FZ-VEBN121* E/3/D

*E :UK; 3: Continental; D: Swiss

✓ FZ-F1 and FZ-N1



5-Device Desktop Cradle

AC adaptor included. Weight and dimensions to be confirmed.

Ports: 2 x LAN; DC-In

Part No: FZ-VEBN141* E/3/D

*E :UK; 3: Continental; D: Swiss

✓ FZ-F1 and FZ-N1

No picture
available

Please refer to third party accessory catalogue or the website for full product details

DOCKING SOLUTIONS

FZ-F1 / FZ-N1 Vehicle Dock

Accommodates additional configuration options and certain hand straps.
Power only (power supply not supplied). AMPS mounting pattern.

Dimensions: 115 x 190 x 90 mm (4.5 x 7.5 x 3.5")

Weight: 0.3 kg / 0.7 lb

Part Nos:

- PCPE-GJN1V01 With power, keyed alike
- PCPE-GJN1V02 With power, keyed differently
- PCPE-GJN1V03 No power, keyed alike
- PCPE-GJN1V04 No power, keyed differently

✓ FZ-F1 and FZ-N1



FZ-F1 / FZ-N1 4-Cup Charging Rack

Rack mountable, includes 4-way power lead.

Part No: PCPE-CDS4BC* 1/2

*1: Continental adaptor; 2: UK adaptor

✓ FZ-F1 and FZ-N1



Please refer to third party accessory catalogue or the website for full product details

MOBILE PRINT / SCAN SOLUTIONS

MW Series A6 & A7 Lightweight Printers

✓ FZ-F1 only

The extremely small and lightweight MW printers are easy-to-operate mobile printing solutions for printing A6 & A7 documents. Works with a range of printing materials, including a 2-ply carbon copy paper, ideal for receipt and ticket printing.

Part No.: PCPE-BRP145B MW-145BT A7 Mobile Printer (USB & Bluetooth)
 PCPE-BRPMW26 MW-260 A6 Mobile Printer (USB & Bluetooth)



PJ7 Series A4 Mobile Printers

✓ FZ-F1 & FZ-N1

Perfectly dimensioned for your briefcase or computer bag, PJ7 series of compact, direct thermal printers can also be easily mounted in your vehicle. Take it out on the road and make sure your clients and customers receive those all-important documents in an instant. Available with 300 dpi print resolution, and with USB, Bluetooth or Wi-Fi.

Part No.: PCPE-BRPJ722 PJ722 A4 mobile printer, 200 dpi with USB
 PCPE-BRPJ723 PJ723 A4 mobile printer, 300 dpi with USB
 PCPE-BRPJ762 PJ762 A4 mobile printer, 200dpi with USB & Bluetooth
 PCPE-BRPJ763 PJ763 A4 mobile printer, 300 dpi with USB & Bluetooth
 PCPE-BRPJ773 PJ773 A4 mobile printer, 300 dpi with USB, Wi-Fi and AirPrint



RJ Series Mobile Printers

✓ FZ-F1 only

The RJ "Rugged Jet" series portable printers are ideal on-person devices for mobile workers needing to print labels and receipts on the go.

Part No.: PCPE-BRP2030 RJ2030 2" ticket/receipt printer (USB & Bluetooth)
 PCPE-BRP2050 RJ2050 2" ticket/receipt printer (USB, Bluetooth & WiFi)
 PCPE-BRP2140 RJ2140 2" ticket and label printer (USB & WiFi)
 PCPE-BRP2150 RJ2150 2" ticket and label printer (USB, Bluetooth & WiFi)
 PCPE-BRP3050 RJ3050 3" Mobile Receipt Printer (USB, serial, Bluetooth & Wi-Fi)
 PCPE-BRP3150 RJ3150 3" Mobile Receipt & Label Printer (USB, serial, Bluetooth & Wi-Fi)
 PCPE-BRPRJ30 RJ4030 4" Mobile Printer (USB, serial & Bluetooth)
 PCPE-BRPRJ40 RJ4040 4" Mobile Printer (USB, serial & Wi-Fi)



TD2000 Series 2" Portable Printers

✓ FZ-F1 only

2.2" labelling & receipt print solutions with spindle-less design to accommodate 5" diameter rolls. Options for TD2120N and TD2130N include Touch Display unit, Battery Base, Lithium Battery, Wi-Fi and Bluetooth connectivity.

Part No.: PCPE-BRP2020 TD2020
 PCPE-BRP2120 TD2120N (200dpi, with optional WiFi & Bluetooth)
 PCPE-BRP2130 TD2130N (300dpi, with optional WiFi & Bluetooth)



DS Mobile Scanners

✓ FZ-F1 only

Powered by your laptop's USB, DS scanners allow you to scan up to A4 size at up to 600dpi, and save, manipulate and share your files away from your desk

Part No.: PCPE-BRPDS62 USB single scanner
 PCPE-BRP720D USB 2-sided scanner
 PCPE-BRPDS82 Wireless, single sided scanner



Please refer to third party accessory catalogue or the website for full product details

PROFESSIONAL SERVICES

Custom BIOS

Part Nos:

- PCPE-PSBIOSB - Custom BIOS Service – Bronze
 - PCPE-PSBIOSS - Custom BIOS Service – Silver
 - PCPE-PSBIOSG - Custom BIOS Service – Gold
- ✓ FZ-F1 only

Android Installation

Part No: PCPE-PSANDRD

Price on Request

✓ FZ-N1 only



SIM Installation

Part No: PCPE-PSSIMIN

✓ FZ-F1 & FZ-N1

Information Management Bundle

IMEI, MAC, SIM, ASSET reporting.

Part No: PCPE-PSATAGB

✓ FZ-F1 & FZ-N1

Customer Branding

Logo badge on device casing or bezel.

Part No: PCPE-PSLOGOB

✓ FZ-F1 & FZ-N1



Customised Deployment / Logistics

Part No: PCPE-PSCDL01

Price on Request.

✓ FZ-F1 & FZ-N1

Bespoke Training Material

Part No: PCPE-PSBTM01

Price on Request

✓ FZ-F1 & FZ-N1

Custom Imaging

Part Nos:

- PCPE-PSIMSP1 – Image Support / Creation (per day)
 - PCPE-PSIMSP2 – On Site Image Support / Creation (per day)
- ✓ FZ-F1 only

Advanced Fota Service

Part No:

- PCPE-XFOTA01 1 year
- PCPE-XFOTA03 3 year

✓ FZ-N1 only



Asset Tagging

Standard, using CPE label set.

Part No: PCPE-PSATAG1

✓ FZ-F1 & FZ-N1

MAC Address Stickers

Applied to unit

Part No: PCPE-PSMACAD

✓ FZ-F1 & FZ-N1

Solution Packaging

Up to 10 items packaged together in a box.

Does not include custom designed case.

Part No: PCPE-PSSPACK

✓ FZ-F1 & FZ-N1

User Profile Setup

Part No: PCPE-PSITS01

Price on Request.

✓ FZ-F1 & FZ-N1



HDD / SSD Duplication

Does not include hardware.

Part No: PCPE-PSHDDD1

Price on Request

✓ FZ-F1 & FZ-N1

Please refer to third party accessory catalogue or the website for full product details

LIFECYCLE SUPPORT SOLUTIONS



Extended Warranty (5 years)

Panasonic's Extended Warranty provides an additional two years of warranty, helping you to minimise repair costs and maximise the life cycle of your Toughbook or Toughpad.

Part No.: FZ-LESPEW5

Accidental Damage (3 or 5 years)

Panasonic's Accidental Damage Warranty provides protection against any eventuality out in the field for up to 5 years, providing you and your workforce with complete peace of mind.

Part No.: FZ-LESPAD* *3 / 5 (5 year option includes Extended Warranty for 5 years)

Extended Battery Warranty (3, 4 or 5 years)

Panasonic's Extended Battery Damage Warranty provides protection against battery failure for up to 5 years, maintaining performance beyond the standard 6 month cover.

Part No.: CF-LESPBAEW* *3 / 4 / 5

Hard Drive Warranty (3, 4 or 5 years)

Panasonic's Hard Drive Warranty allows you to keep your original hard drive in the event of a replacement being required, or in the event that your device needs to be sent for repair, ensuring the security of your sensitive data.

Part No.: CF-LESPHDEW* *3 / 4 / 5

Docking Station Warranties (3, 4, or 5 years)

Extended Warranty:

CF-LESPPD*	*3 / 4 / 5	Panasonic Dock – 3, 4 or 5 years Extended Warranty
CF-LESPND*	*3 / 4 / 5	3rd Party Dock – 3, 4 or 5 years Extended Warranty

Accidental Damage Part Nos.:

CDS-LESPAD*	*3 / 4 / 5	Panasonic Dock – 3, 4 or 5 years Accidental Damage Warranty
CDS-LESPTAD*	*3 / 4 / 5	3rd Party Dock – 3, 4 or 5 years Accidental Damage Warranty

Toughbook Smart Service

Real time analytics showing the health and performance of your estate of mobile devices, focussing on areas such as battery life, data usage, disruptions and connectivity.

Part No.:	CF-LESPSSM*	*3 / 5	Smart Service self-managed licence
	CF-LESPSSPM*	*3 / 5	Smart Service Panasonic-managed licence

Please refer to third party accessory catalogue or the website for full product details





ABSOLUTE™

Absolute Data and Device Security

Patented technology to centrally secure Toughbook or Toughpad devices for unrivalled endpoint security and data risk management.

Part Nos:

- PCPE-ABSDPM* 1/2/3/4/6 Absolute Resilience 1/2/3/4/5 yrs
- PCPE-ABSDPR* 1/2/3/4/6 Absolute Control 1/2/3/4/5 yrs

NETMOTION®

NetMotion Mobility

More than just a VPN, “Mobility” Mobile Performance Management software can dynamically maintain access to applications through changing network conditions, allowing mobile workers to remain productive anywhere their work takes them. Diagnostics option also available.

Part Nos:

- PCPE-NLW 1/3/5*** Mobility and Diagnostics (plus 1, 3 or 5 years maintenance/support)
- PCPE-NMW 1/3/5*** Mobility only (plus 1, 3 or 5 years maintenance/support)

SOTI

SOTI MobiControl

MobiControl is an Enterprise Mobility Management (EMM) solution with enhanced EMM features like application management, content management, location services and remote help (Key USP).

Part Nos:

- PCPE-SOTMC** 1/2/3/5 U/E Perpetual licence (1, 2, 3 or 5 yrs / UK or EU)
- PCPE-SOTCL** 1/2/3/5 U/E Cloud license & hosting (1, 2, 3 or 5 yrs / UK or EU)

Please refer to separate data sheets for full details of each software offering.

SOFTWARE SOLUTIONS – PARTNER ISVS



Staylinked

StayLinked's SmartTE software provides a cost-effective way to take advantage of touchscreen devices with Terminal Emulation by transforming traditional "green screen" application screens into easy-to-use, graphical screens with no changes to the underlying enterprise applications.

Part numbers available upon request.



Sygic

Sygic Professional GPS Navigation with SDK for fleets and enterprise ready Maps for fleet management, tracking, route planning and optimization solutions are trusted by more than 2000 fleets in fields of transportation, logistics, parcel delivery, field work, automotive, utilities, emergency and communal services.

Sygic Professional GPS Navigation works offline and features truck specific routing, itinerary with time windows and over 60 APIs for development with Android and Windows based apps.

Part numbers available upon request.

Please refer to third party accessory catalogue or the website for full product details

ACCESSORY SUMMARY 1

Solution Type	Part Number	Description
Power Management	FZ-VZSUN110U	Standard Battery Pack (3200 mAh)
	FZ-VZSUN120U/W	Extended Battery Pack (6400 mAh)
	FZ-KN1AA00* 1/2	USB Charger Kit (1: Continental; 2: UK)
	FZ-VCBN121* E/3/D	4-bay Battery Charger (E: UK; 3: Continental; D: Swiss)
	CF-AA6373A* E/3/D	AC Power Supply (*E: UK; 3: Continental; D: Swiss)
	PCPE-LNDAC01	AC/DC Combo Adaptor
	CF-LNDMLSTD	Mil Spec vehicle charger
	PCPE-LND1234	32W Power Adaptor (12-32Vdc)
	PCPE-LND1214	32W Power Adaptor (12-16Vdc)
	PCPE-LNDFH11	Car Charger (70-110V) For forklift
	PCPE-LNDFH32	Car Charger (12-32V) For forklift
	PCPE-LNDFH60	Car Charger (20-60VDC) For forklift
Styluses	FZ-VNPN11U	FZ-F1/FZ-N1 Active Pen
	PCPE-LDYST01	Capacitive Stylus Pen
	CF-VNP021U	Panasonic Capacitive Passive Pen
	PCPE-INFUVA2	Stylus Tether
Connectivity	PCPE-CRDLLP2	Semi-Rugged 4G/WiFi Router
	PCPE-CRDSOL1	Semi-Rugged 4G/WiFi Router with MIMO Antenna
	PCPE-CRDL110	Rugged 4G/WiFi Router
Protection & Security	CF-VNC001W	Cleaning Cloth for LCD
	FZ-VPFN11U	Shatterproof Protective LCD film
Carrying Solutions	FZ-VSTN12U	Panasonic Holster for FZ-F1/FZ-N1
	FZ-VSTN11U	Panasonic Hand Strap for FZ-F1/FZ-N1
	PCPE-SYSX101	Quick Release Clip Holster for FZ-F1/N1
	PCPE-SYS1573	Synthetic Case for FZ-F1/FZ-N1 with Click Fix stud
	PCPE-SYS2128	Click Fix Belt Loop
	PCPE-SYS1573	Chest Harness with Click Fix Dock
	PCPE-INFF1H1	FZ-F1 / FZ-N1 Holster
	PCPE-INFF1S2	FZ-F1/N1 Enhanced Hand Strap
Docking Solutions	PCPE-INFF1S* 1/3	FZ-F1/N1 Hand Strap (*1: LXL; 2: SMD)
	FZ-VCBN11U	Charging cup and stand (AC adaptor not included)
	FZ-VEBN111* E/3/D	Single Device Desktop Cradle (*E :UK; 3: Continental; D: Swiss)
	FZ-VEBX121* E/3/D	4-Device Desktop Cradle (*E :UK; 3: Continental; D: Swiss)
	PCPE-GJN1V01/2/3/4	FZ-F1 / FZ-N1 Vehicle Dock
	PCPE-CDS4BC1/2	4-Cup Charging Rack (1: Continental; 2: UK)

ACCESSORY SUMMARY 2

Solution Type	Part Number	Description
Mobile Printing Solutions	PCPE-BRP145B	MW-145BT A7 Portable Printer (with USB & Bluetooth)
	PCPE-BRPMW26	MW-260 A6 Mobile Printer (with USB & Bluetooth)
	PCPE-BRPJ722	PJ722 A4 mobile printer, 200 dpi with USB
	PCPE-BRPJ723	PJ723 A4 mobile printer, 300 dpi with USB
	PCPE-BRPJ762	PJ762 A4 mobile printer, 200dpi with USB & Bluetooth
	PCPE-BRPJ763	PJ763 A4 mobile printer, 300 dpi with USB & Bluetooth
	PCPE-BRPJ773	PJ773 A4 mobile printer, 300 dpi with USB, WiFi and AirPrint
	PCPE-BRP2030	RJ2030 2" ticket/receipt printer (USB & Bluetooth)
	PCPE-BRP2050	RJ2050 2" ticket/receipt printer (USB, Bluetooth & WiFi)
	PCPE-BRP2140	RJ2140 2" ticket and label printer (USB & WiFi)
	PCPE-BRP2150	RJ2150 2" ticket and label printer (USB, Bluetooth & WiFi)
	PCPE-BRP3050	RJ3050 Mobile Receipt Printer (with USB, serial, Bluetooth & Wi-Fi)
	PCPE-BRP3150	RJ3150 Mobile Receipt & Label Printer (with USB, serial, Bluetooth & Wi-Fi)
	PCPE-BRPRJ30	RJ-4030 4" Mobile Printer (with USB, serial & Bluetooth)
	PCPE-BRPRJ40	RJ-4040 4" Mobile Printer (with USB, serial & Wi-Fi)
	PCPE-BRP2020	TD2020 Mobile Printer (200 dpi)
	PCPE-BRP2120	TD2120N Mobile Printer (200dpi, with optional Wi-Fi & Bluetooth)
	PCPE-BRP2130	TD2130N Mobile Printer (300dpi, with optional Wi-Fi & Bluetooth)
	PCPE-BRPDS62	USB single sided scanner
	PCPE-BRP720D	USB double sided scanner
PCPE-BRPDS82	Wireless singles sided scanner	
Professional Services	PCPE-PSBIOS B/S/G	Custom BIOS Service (Bronze / Silver / Gold)
	PCPE-PSANDRD	Android Installation
	PCPE-XFOTA01/03	Advanced FOTA Service (1 year / 3 year)
	PCPE-PSIMSP1	Image Support / Creation (per day)
	PCPE-PSIMSP2	On Site Image Support / Creation (per day)
	PCPE-PSSIMIN	SIM Installation
	PCPE-PSATAG1	Asset Tagging
	PCPE-PSATAGB	Information Management Bundle
	PCPE-PSMACAD	MAC Address Stickers
	PCPE-PSLOGOB	Custom logo badge
	PCPE-PSSPACK	Solution Packaging
	PCPE-PSCDL01	Customised Deployment / Logistics
	PCPE-PSITS01	User Profile Setup
	PCPE-PSBTM01	Bespoke Training Material
	PCPE-PSHDDD1	HDD / SSD Duplication

ACCESSORY SUMMARY 3

Solution Type	Part Number	Description
Lifecycle Support Solutions	FZ-LESPEW5	Extended Warranty
	FZ-LESPAD* 3/5	Accidental Damage Warranty (3 or 5 years)
	CF-LESPBAEW* 3/4/5	Extended Battery Warranty (3 to 5 years)
	CF-LESPHDEW *3/4/5	Hard Drive Warranty
	CF-LESPPD* 3/4/5/	Panasonic Dock Extended Warranty – 3, 4 or 5 years
	CF-LESPND* 3/4/5/	Third Party Dock Extended Warranty – 3, 4 or 5 years
	CDS-LESPAD* 3/4/5	Panasonic Dock Accidental Damage Warranty - 3, 4 or 5 years
	CDS-LESPTAD* 3/4/5	3rd Party Dock Accidental Damage Warranty - 3, 4 or 5 years
	CF-LESPSSSM*	Toughbook Smart Service – Self-Managed
	CF-LESPSSPM*	Toughbook Smart Service – Panasonic Managed
Software Solutions	PCPE-ABSDPM* 1/2/3/4/6	Absolute Resilience
	PCPE-ABSDPR* 1/2/3/4/6	Absolute Control
	PCPE-NMW 1/3/5***	NetMotion Mobility & Diagnostics software and support
	PCPE-NLW 1/3/5***	
	PCPE-SOTMC 1/2/3/5 U/E	Subscription & Maintenance (1, 2, 3 or 5 yrs; U: UK/E: EU)
	PCPE-SOTCL 1/2/3/5 U/E	Cloud License & hosting (1, 2, 3 or 5 yrs; U: UK/E: EU)

Panasonic and Toughbook are brand names and registered trademarks of Panasonic Corporation. Microsoft® and Windows® are registered trademarks of Microsoft® Corporation of the United States and/or other countries. All rights reserved. Google, Android and other marks are trademarks of Google Inc. All rights reserved. All other brand names shown are the registered trademarks of the relevant companies.

Computer Product Solutions (CPS) BU, Panasonic System Communications Company Europe (PSCEU), Panasonic Marketing Europe GmbH, Hagenauer Straße 43, D-65203 Wiesbaden (Germany).